



THE OFFICIAL PUBLICATION
OF HEALTH LEVEL SEVEN®
INTERNATIONAL

JANUARY 2016

NEWS

® Health Level Seven, HL7, CDA, FHIR and the FHIR flame image are registered trademarks of Health Level Seven International, registered in the US Trademark Office.

C-CDA Implementation and its Effects

**ART-DECOR Templates
for the Inpatient:
C-CDA 2.1 and Temple**

ONC Grant Projects for HL7

**Trillium Bridge Recommendations
for Policy Convergence**

Plus...

**ASSESS CT - Second Validation
Workshop in Berlin**

HL7 Serbia and Spain Affiliates

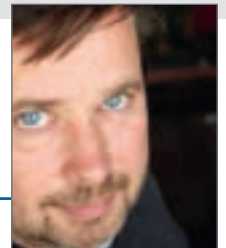
**A Retrospective on
HL7's Process
Improvement
Committee**





C-CDA 2.1 Template Library Available in ART-DECOR

ART-DECOR Templates for the Impatient: C-CDA 2.1 and Temple



What is C-CDA?

You are probably aware of the fact that the Consolidated CDA® (C-CDA) is a US-realm specification. Meanwhile, Release 2.1 has been published by HL7 International, with over 210 Templates and their associated value sets. Although it serves US-centric requirements – with US-specific code systems (such as CPT-4 and RxNorm) and value sets, US-specific identifiers, requires Race and Ethnicity that is inappropriate in many other countries, etc. – it has been, is, and will be a source of inspiration for a lot of other projects such as those happening in Europe.

ART-DECOR and C-CDA

After having transformed and published C-CDA 1.1 in HL7's Templates Exchange

format (a draft standard for trial use (DSTU)) months ago, Version 2.1 was also made available. While the original C-CDA specifications focus on implementation guides, the ART-DECOR Building Block Repository (BBR) features all 370 templates and template versions as a template library that can easily be used in any ART-DECOR project, whether as-is or as a basis for refinement or adaptation.

By Dr Kai U. Heitmann, FHL7, Co-Chair, HL7 International Templates Work Group; CEO, HL7 Germany; ART-DECOR Expert Group; Heitmann Consulting and Services (info@kheitmann.de)

With assistance from ART-DECOR Expert Group members: Alexander Henket, Marc de Graauw, Maarten Ligetvoet, and Gerrit Boers

For more information about ART-DECOR's Building Block Repository feature, see:

[http://art-decor.org/mediawiki/index.php/Building_Block_Repository_\(BBR\)](http://art-decor.org/mediawiki/index.php/Building_Block_Repository_(BBR))

Consolidated CDA Release 1.1 and 2.1

In addition to the C-CDA Release 1.1, published through the ART-DECOR BBR mechanism, C-CDA Release 2.1 was made available through exactly the same type of repository. It must be noted that this setup is an amalgamation of C-CDA 1.1 and 2.1. Templates and value sets are versioned and each is tied to one or more release of C-CDA.

The templates and value sets for 1.1 and 2.1 in this ART-DECOR project are transformations from the proprietary export format of the Lantana's Trifolia Workbench. They have been revised and manually corrected to fit the requirements of the Templates DSTU and to allow proper schematron generation. Please note that parts of the Trifolia Workbench maybe copyrighted by Lantana Consulting Group (see <http://www.lantanagroup.com>).

C-CDA: Everywhere as a Source of Inspiration and More

A couple of years ago a project started to harmonize epSOS (the European Patient Summary document) and the Continuity of Care Document (as in C-CDA). A revision is underway to eliminate some minor errors and flaws. The

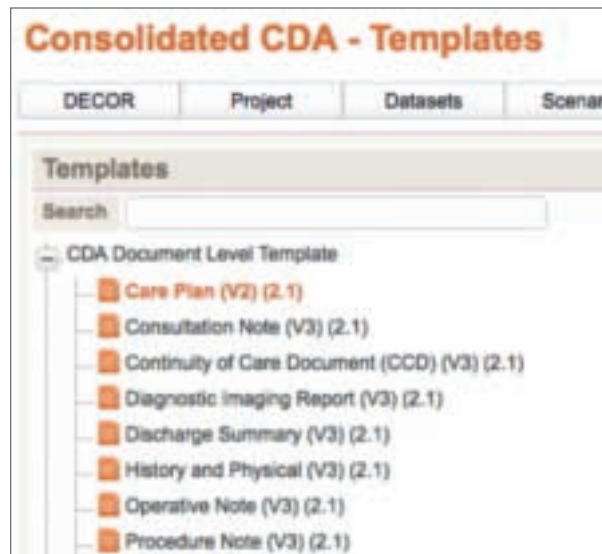


Figure 1: Navigation index of document level C-CDA Release 2.1 Templates in ART-DECOR

original epSOS specification in ART-DECOR can be found here: <http://art-decor.org/art-decor/decor-project--epsos->

A new project called “Interpas” (International Patient Summary) is seen as an attempt to create a document definition to exchange patient information for persons traveling between Europe and the United States. The specification is planned to be jointly balloted with ISO.

Originally included in C-CDA for Diagnostic Imaging Reports there is now the DICOM PS.3.20 “Imaging Reports Using HL7 Clinical Document Architecture”. It features two document level templates: Imaging Report

(1.2.840.10008.9.1) and Imaging Addendum Report (1.2.840.10008.9.24).

How to Use C-CDA in ART-DECOR

On the main servers hosted by the ART-DECOR Expert Group (ADEG), C-CDA 2.1 is available automatically. It is published under

<http://art-decor.org/art-decor/decor-project--ccda->

In regular ART-DECOR projects it is easy to either link C-CDA Templates from the repository as-is by linking them into your project or to refine them by specialization or adaptation.

Continued on page 14

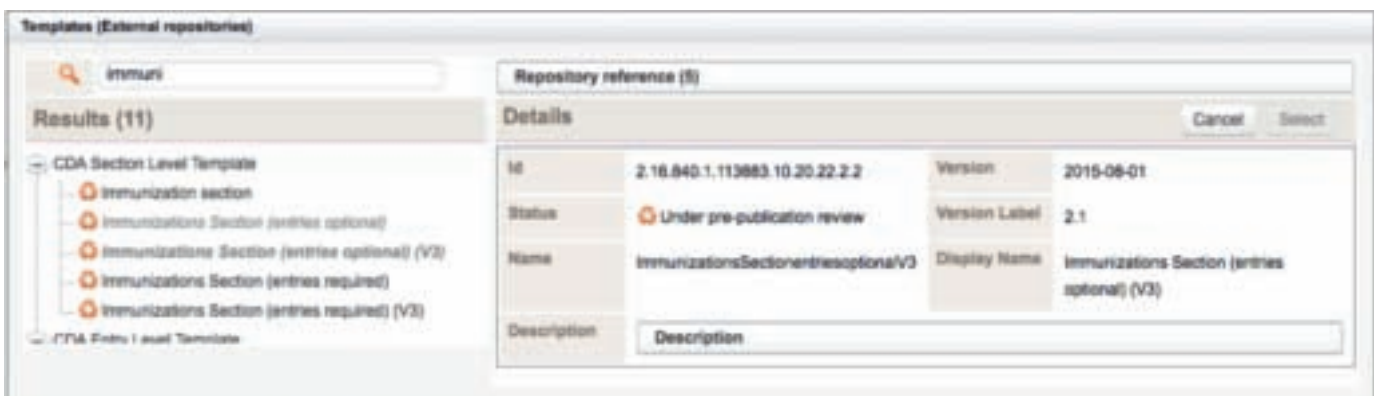


Figure 2: Simple search and link dialog to reference C-CDA Templates from the Building Block Repository in ART-DECOR

Continued from page 13

ART-DECOR Templates for the Inpatient: C-CDA 2.1 and Temple



Temple: ART-DECOR's Second Template Editor Released

After completing intense testing, the ART-DECOR Expert Group has officially released *Temple*, the second HL7 Template Editor as part of the ART-DECOR tool suite.

In addition to the regular graphical Template Editor supporting tabular editing of templates, *Temple* offers an XML-like editor with extra support with

auto-complete functionality for those who are familiar with HL7's Templates DSTU (HL7 Templates Standard: Specification and Use of Reusable Information Constraint Templates, Release 1) and prefer to work with XML-editing rather than a graphical tool.

Temple allows direct manipulation of the underlying definition in XML. It supports content completion, inspection of referenced artifacts, and validation of the definition before saving. ■

About ART-DECOR

ART-DECOR is an open-source tool suite that supports the creation and maintenance of HL7 templates, value sets as well as data sets. It features cloud-based federated Building Block Repositories (BBR) for templates and value sets. The tool offers a data set and a scenario editor, two template editors, a value set editor and includes browsers for various international terminologies such as LOINC and SNOMED CT.

ART-DECOR supports comprehensive collaboration of team members within and between governance groups. For an overview, see ART-DECOR: An Open-Source Tool Bridging the Chasm between Clinicians and Health IT in the September 2014 edition of the HL7 News (http://www.hl7.org/documentcenter/public/newsletters/HL7_NEWS_20140908.pdf).

ART-DECOR is used in over 30 projects throughout Europe and other parts of the world, e.g. the national infrastructure ELGA in Austria, the Dutch Nictiz (National Healthcare Standards Institute), the RIVM (National Institute of Public Health and the Environment in the Netherlands), HL7 and IHE Germany.

For more information go to <http://art-decor.org> or visit the ART-DECOR Blog at <http://blog.art-decor.org> on a regular basis.